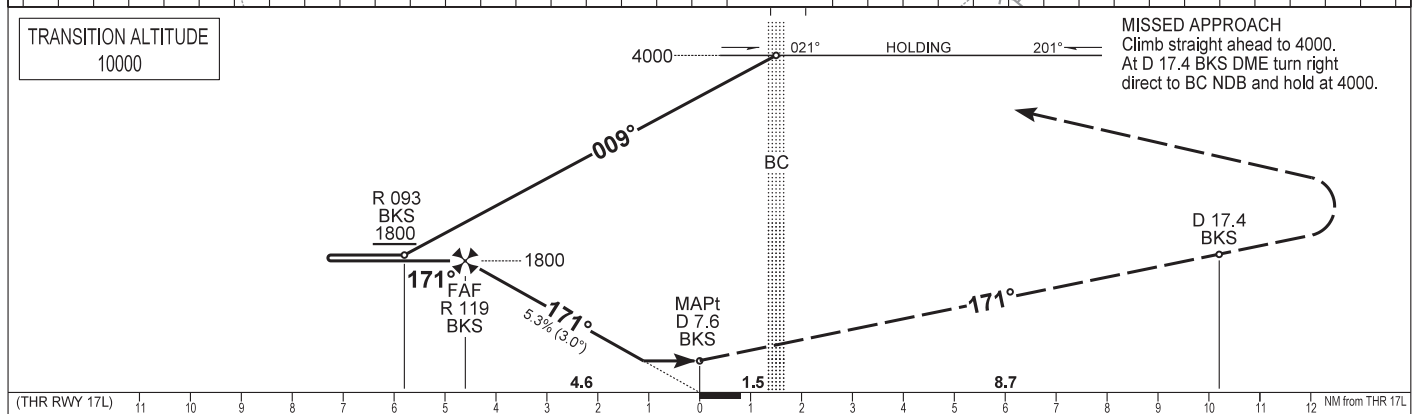
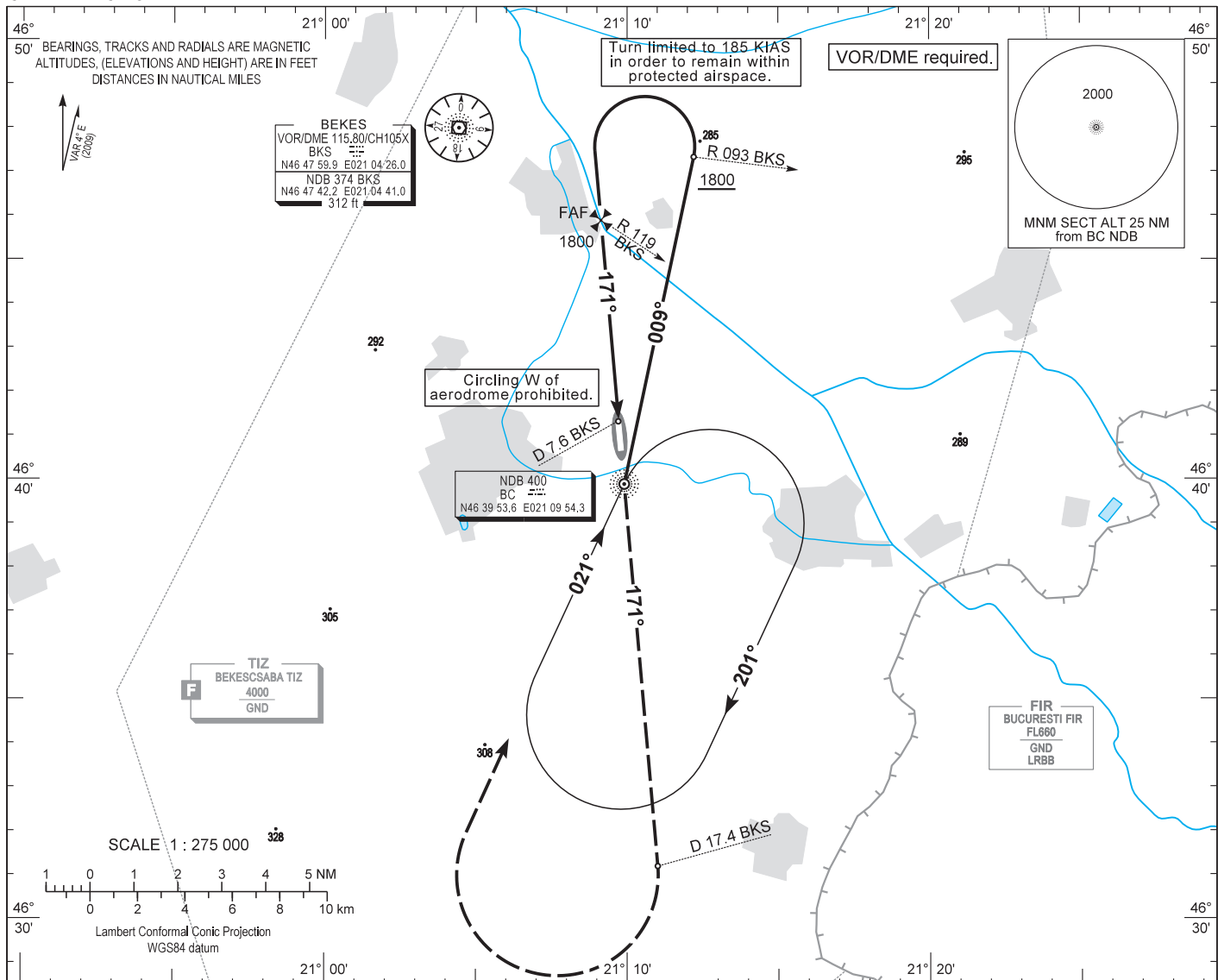


AIP HUNGARY

INSTRUMENT APPROACH CHART - ICAO  
AERODROME ELEV 286  
HEIGHTS RELATED TO THR RWY 17L - ELEV 283

BÉKÉSCSABA INFO 123.250  
BUDAPEST INFORMATION (EAST) 133.000

BÉKÉSCSABA  
NDB RWY 17L  
(ACFT CAT A, B, C, D)



|                                     |           |      |      |      |      |   |   |   |   |   |   |   |                    |   |   |   |              |         |      |      |      |      |      |    |                 |     |     |
|-------------------------------------|-----------|------|------|------|------|---|---|---|---|---|---|---|--------------------|---|---|---|--------------|---------|------|------|------|------|------|----|-----------------|-----|-----|
| (THR RWY 17L)                       | 11        | 10   | 9    | 8    | 7    | 6 | 5 | 4 | 3 | 2 | 1 | 0 | 1                  | 2 | 3 | 4 | 5            | 6       | 7    | 8    | 9    | 10   | 11   | 12 | NM from THR 17L |     |     |
| OCA (OCH)                           | A         |      |      |      | B    |   |   |   | C |   |   |   | D                  |   |   |   | GROUND SPEED |         |      |      |      | kt   | 60   | 90 | 120             | 150 | 180 |
| STRAIGHT-IN APPROACH                | 640 (360) |      |      |      |      |   |   |   |   |   |   |   | FAF - MAPt 4.62 NM |   |   |   |              | MIN:sec | 4:38 | 3:05 | 2:19 | 1:51 | 1:33 |    |                 |     |     |
| CIRCLING APPROACH<br>W of aerodrome | ft AMSL   | 690  | 790  | 890  | 990  |   |   |   |   |   |   |   |                    |   |   |   |              |         |      |      |      |      |      |    |                 |     |     |
|                                     | VIS. m    | 1900 | 2800 | 3700 | 4600 |   |   |   |   |   |   |   |                    |   |   |   |              |         |      |      |      |      |      |    |                 |     |     |

Not authorised.

## AD 2 LHBC INSTRUMENT APPROACH CHART NDB RWY 17L

### Approach from BC NDB:

Initial altitude: 4000.

Fly outbound on 009° and descend to 1800 or above.

When crossing R 093 BKS VOR turn left (185 KIAS max.) to 171° inbound BC NDB.

After crossing R 119 BKS VOR leave 1800 and descend to 640.

### Holding procedure:

Holding fix: BC NDB.

Right hand holding pattern.

Inbound track: 021°

Outbound track: 201°

Rate of turn: 3°/sec. or 25° bank angle

(whichever requires lesser bank)

Outbound timing: 1 min.

Minimum holding altitude: 4000

**Final approach descent: 3.00°**