

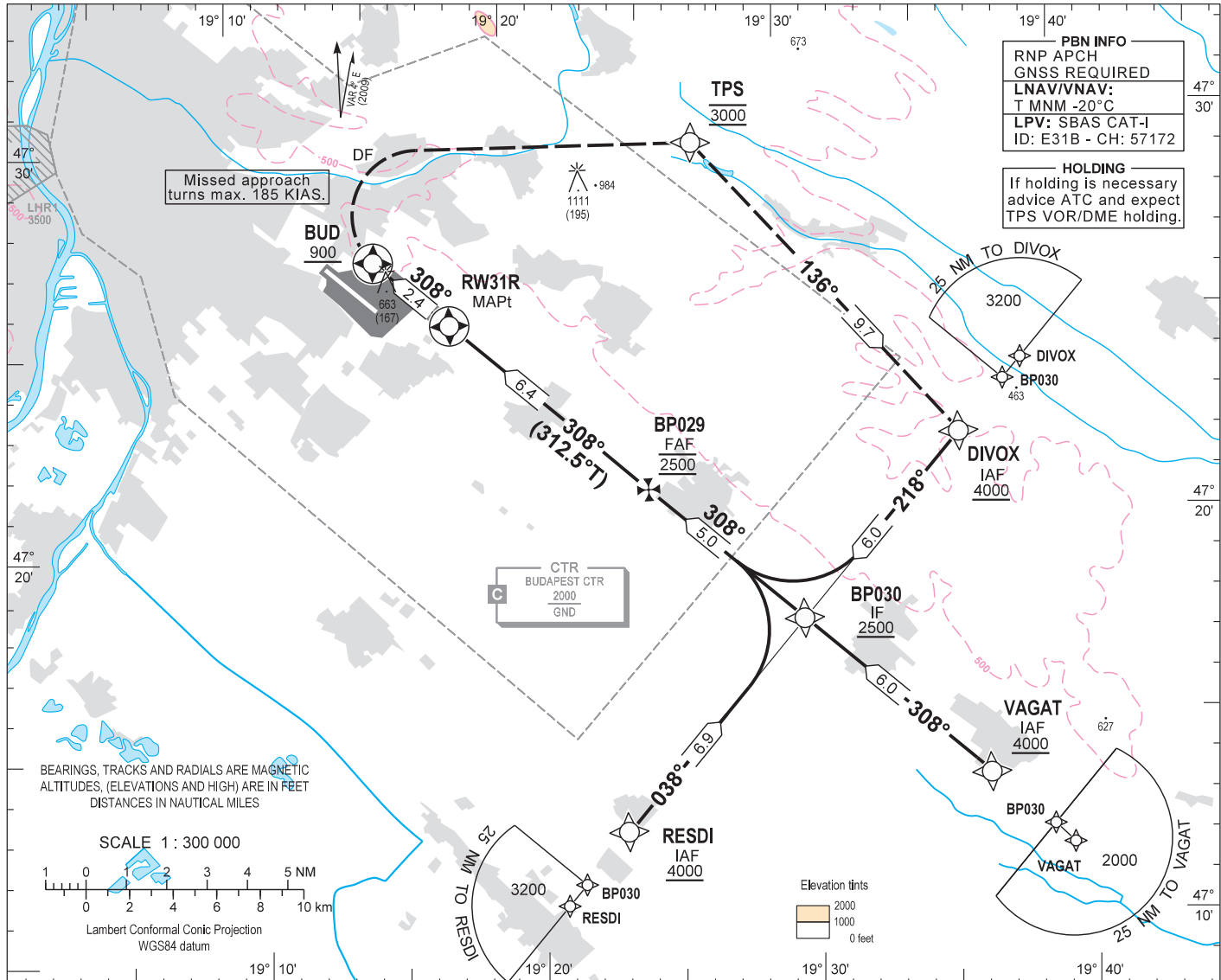
AIP HUNGARY

INSTRUMENT APPROACH CHART - ICAO

AERODROME ELEV 496
HEIGHTS RELATED TO THR RWY 31R - ELEV 416

BUDAPEST APPROACH 129.700 ATIS 132.375 (117.300)
122.975 BUDAPEST TOWER 118.100
119.500 BUDAPEST GROUND 121.900

BUDAPEST/LISZT FERENC
RNAV^(GNS) RWY 31R
(ACFT CAT A, B, C, D)

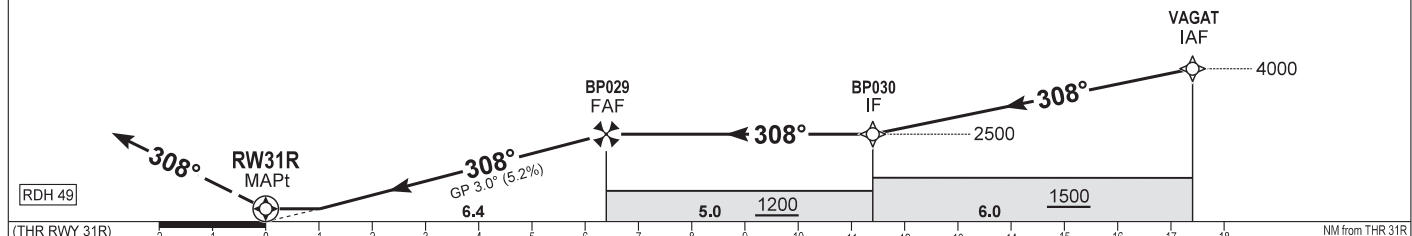


PBN INFO
RNP APCH
GNSS REQUIRED
LNAV/VNAV:
T MNM -20°C
LPV: SBAS CAT-I
ID: E31B - CH: 57172

HOLDING
If holding is necessary
advise ATC and expect
TPS VOR/DME holding.

MISSED APPROACH
Climb to BUD at or above 900.
At BUD turn right direct to TPS at 3000.
Then turn right and continue to DIVOX at 3000.
Maximum turning speed 185 KIAS.

TRANSITION ALTITUDE
10000



CAT OF ACFT		A	B	C	D	DIST THR / RWY31R							
						NM	6.0	5.0	4.0	3.0	2.0	1.0	0.0
OCA (H) STRAIGHT-IN	LNAV	2.5% macg	1110 (686)	1130 (710)	1150 (734)	1170 (753)	ALTITUDE						
		4.0% macg	770 (349)		780 (361)	790 (367)	ft	2380	2060	1740	1420	1100	780
	LNAV/VNAV	2.5% macg	979 (563)	989 (573)	1010 (594)	1036 (620)	GS						
		4.0% macg	650 (234)	660 (244)	669 (253)	687 (271)	kt	80	100	120	140	160	180
	LPV	2.5% macg	979 (563)	989 (573)	999 (583)	1009 (593)	BP029 - RWY31R (6.4 NM)						
		4.0% macg	607 (191)	617 (201)	627 (211)	636 (220)	Timing not authorised for defining the MAPt.						
CIRCLING		970	1190	1310	1510	Rate of descent (326.1 ft/NM)							
						ft/min	430	540	650	760	860	970	

AD 2 LHBP INSTRUMENT APPROACH CHART RNAV_(GNSS) RWY 31R

via VAGAT

PT	WP ID	OverFly	Fix role	TD	VAR	CRS Val (°)	CRS Type	TIME (s)	DIST (NM)	MNM ALT (ft)	MAX ALT (ft)	IAS MAX (kt)	VRT ANG	NAV PERF
IF	VAGAT		IAF		4.5					4000				RNP APCH
TF	BP030		IF		4.5	312.6	TT		6.0	2500				RNP APCH
TF	BP029		FAF		4.5	312.5	TT		5.0	2500	2500			RNP APCH
TF	RW31R	Y	MAPt		4.5	312.5	TT		6.4	466			-3.0	RNP APCH
TF	BUD	Y	MATF		4.5	312.4	TT		2.4	900		185		RNP APCH
DF	TPS		MATF		4.5					3000	3000	185		RNP APCH
TF	DIVOX				4.5	140.2	TT		9.7	3000	3000			RNP APCH

via DIVOX

PT	WP ID	OverFly	Fix role	TD	VAR	CRS Val (°)	CRS Type	TIME (s)	DIST (NM)	MNM ALT (ft)	MAX ALT (ft)	IAS MAX (kt)	VRT ANG	NAV PERF
IF	DIVOX		IAF		4.5					4000				RNP APCH
TF	BP030		IF		4.5	222.6	TT		6.0	2500				RNP APCH
TF	BP029		FAF		4.5	312.5	TT		5.0	2500	2500			RNP APCH
TF	RW31R	Y	MAPt		4.5	312.5	TT		6.4	466			-3.0	RNP APCH
TF	BUD	Y	MATF		4.5	312.4	TT		2.4	900		185		RNP APCH
DF	TPS		MATF		4.5					3000	3000	185		RNP APCH
TF	DIVOX				4.5	140.2	TT		9.7	3000	3000			RNP APCH

via RESDI

PT	WP ID	OverFly	Fix role	TD	VAR	CRS Val (°)	CRS Type	TIME (s)	DIST (NM)	MNM ALT (ft)	MAX ALT (ft)	IAS MAX (kt)	VRT ANG	NAV PERF
IF	RESDI		IAF		4.5					4000				RNP APCH
TF	BP030		IF		4.5	042.5	TT		6.9	2500				RNP APCH
TF	BP029		FAF		4.5	312.5	TT		5.0	2500	2500			RNP APCH
TF	RW31R	Y	MAPt		4.5	312.5	TT		6.4	466			-3.0	RNP APCH
TF	BUD	Y	MATF		4.5	312.4	TT		2.4	900		185		RNP APCH
DF	TPS		MATF		4.5					3000	3000	185		RNP APCH
TF	DIVOX				4.5	140.2	TT		9.7	3000	3000			RNP APCH

SBAS FAS Data Block Coding Data

FAS-DB (CRC wrapped data)

Operation type	0
SBAS provider ID	1
Airport identifier	LHBP
RWY	31R
Approach performance designator	0
Route indicator	
Reference path data selector	0
Reference path identifier	E31B
LTP/FTP latitude	472522.6200N
LTP/FTP longitude	0191737.8800E
LTP/FTP ellipsoidal height (m)	170.4
FPAP latitude	472644.3865N
FPAP longitude	0191525.7790E
Threshold crossing height (TCH)	15
TCH units	1
Glide path angle (degrees)	3.00
Course width at threshold (m)	105.00
Length offset (m)	40
Horizontal alert limit (m)	40.0
Vertical alert limit (m)	35.0
Computed Data Block	10 10 02 08 0C 5F 00 00 02 31 33 05 78 0A 5A 14 B0 AF 47 08 A8 1A CD 7E 02 F6 F7 FB 2C 81 2C 01 64 05 C8 AF D1 FF 45 66
Computed CRC	D1FF4566

FAS-DB (not CRC wrapped)

ICAO code	LH
LTP/FTP Orthometric height (m)	126.9
FPAP Orthometric height (m)	126.9

WAYPOINT COORDINATES

WP ID	Latitude	Longitude
VAGAT	N47 13 38.1	E019 36 28.7
DIVOX	N47 22 06.5	E019 35 57.5
RESDI	N47 12 38.0	E019 23 11.1
BP030	N47 17 41.5	E019 29 59.5
BP029	N47 21 04.1	E019 24 34.4
RW31R	N47 25 22.62	E019 17 37.88
BUD	N47 27 01.6	E019 14 58.0
TPS	N47 29 35.7	E019 26 46.4