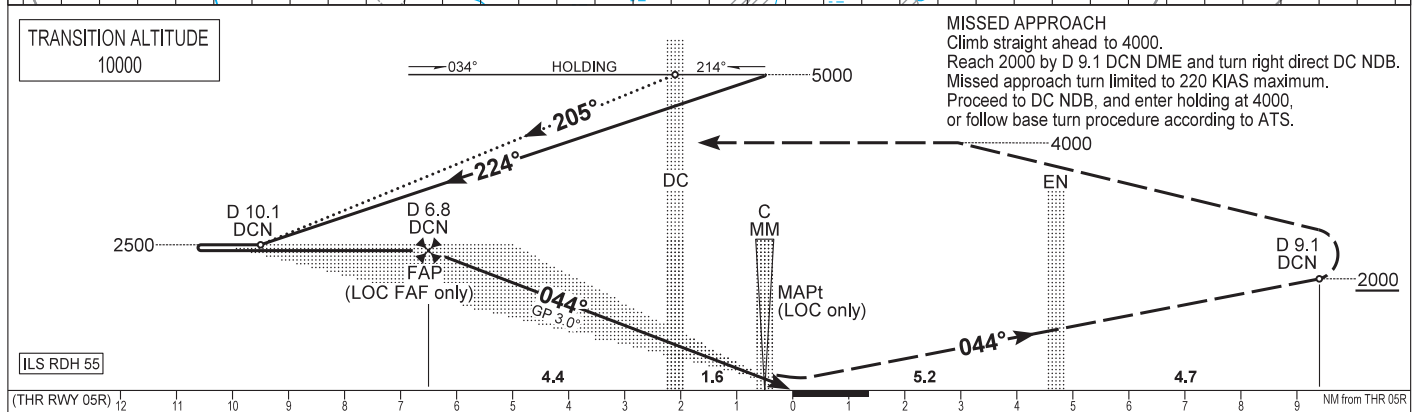
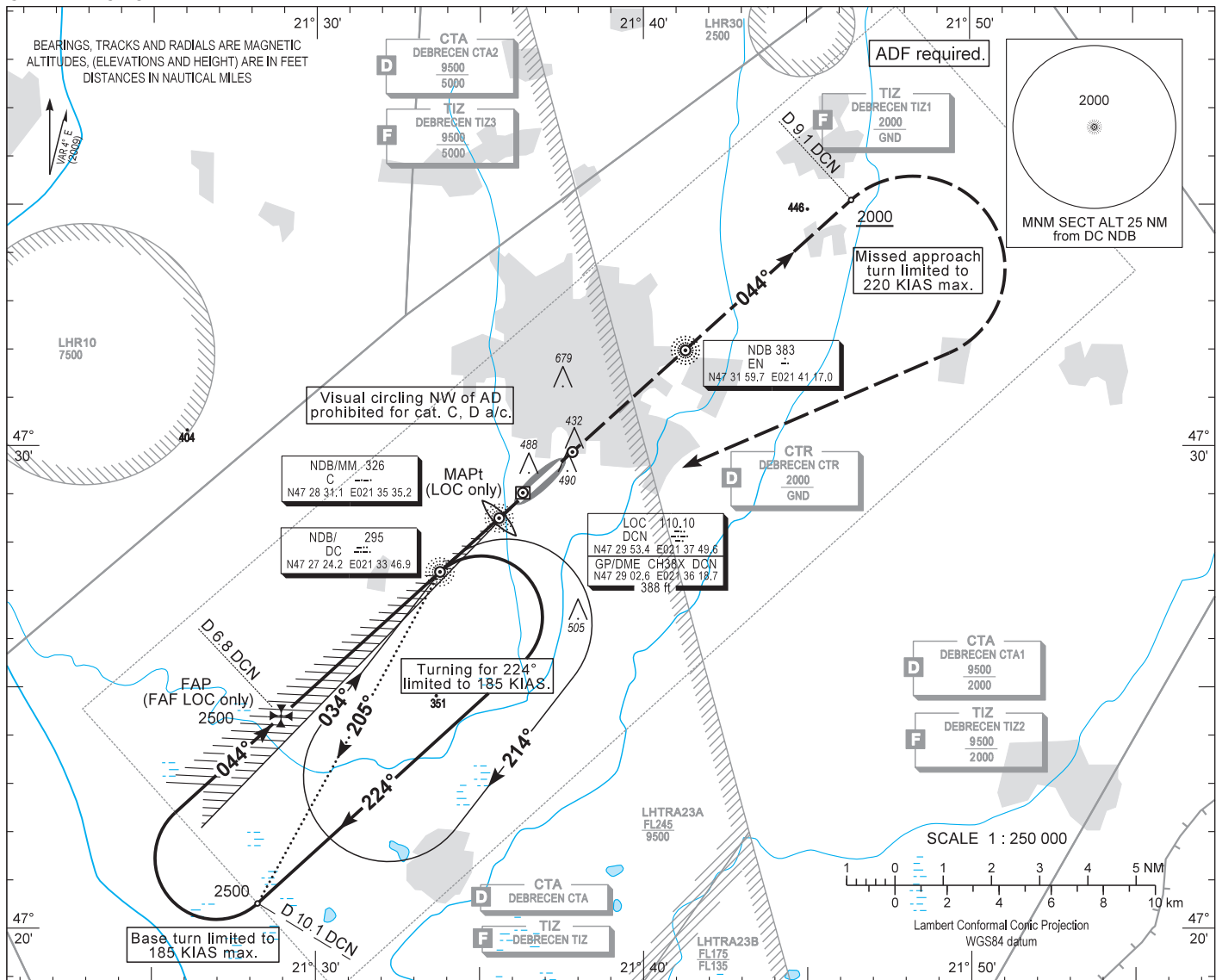


AIP HUNGARY

INSTRUMENT APPROACH CHART - ICAO  
AERODROME ELEV 359  
HEIGHTS RELATED TO THR RWY 05R - ELEV 355

DEBRECEN TOWER 125.900  
DEBRECEN INFO 125.900  
BUDAPEST INFORMATION (EAST) 133.000

DEBRECEN ILS and LOC RWY 05R  
(ACFT CAT A, B, C, D)



OCA (OCH)		A	B	C	D	GROUND SPEED							
STRAIGHT-IN APPROACH	Cat. I, Press. ALT	508 (153)	520 (165)	528 (173)	539 (184)	kt	60	90	120	150	180		
	LOC only	660 (310)				FAF - MAPt (C) 6.04 NM	MIN:sec	6:03	4:01	3:01	2:25	2:01	
CIRCLING APPROACH		ft AMSL	1060	1060	1060 SE of AD only	1060 SE of AD only	Rate of descent (5.2%)	m/s	1,6	2,4	3,2	4,0	4,8
		VIS. m	1900	2800	3700	4600							

## AD 2 LHDC INSTRUMENT APPROACH CHART ILS OR LOC RWY 05R

### ILS approach from DC NDB (Holding):

Initial altitude: 5000.

When crossing DC NDB holding fix turn right to heading 224° (185 KIAS max.) and descend to 2500.

Fly outbound and at D 10.1 DCN DME turn right (185 KIAS max.) to intercept DCN LOC 044°.

Glide path interception at D 6.8 DCN DME (descent fix), then follow ILS.

### Base turn ILS approach from DC NDB:

Available at ATC discretion only.

When crossing DC NDB fly outbound on track 205° (QDR 205°) and descend to 2500.

At D 10.1 DCN DME turn right (185 KIAS max.) to intercept DCN LOC 044°, then follow ILS.

### Holding procedure:

Holding fix: DC NDB.

Right hand holding pattern.

**Sector 1 (parallel) entry prohibited (except Missed Approach returning direct to DC NDB).**

Maximum speed:	220 KIAS
Inbound track:	034°
Outbound track:	214°
Rate of turn:	3°/sec. or 25° bank angle (whichever requires lesser bank)
Outbound timing:	1 min.
Minimum holding altitude:	5000 4000 for Missed Approach