

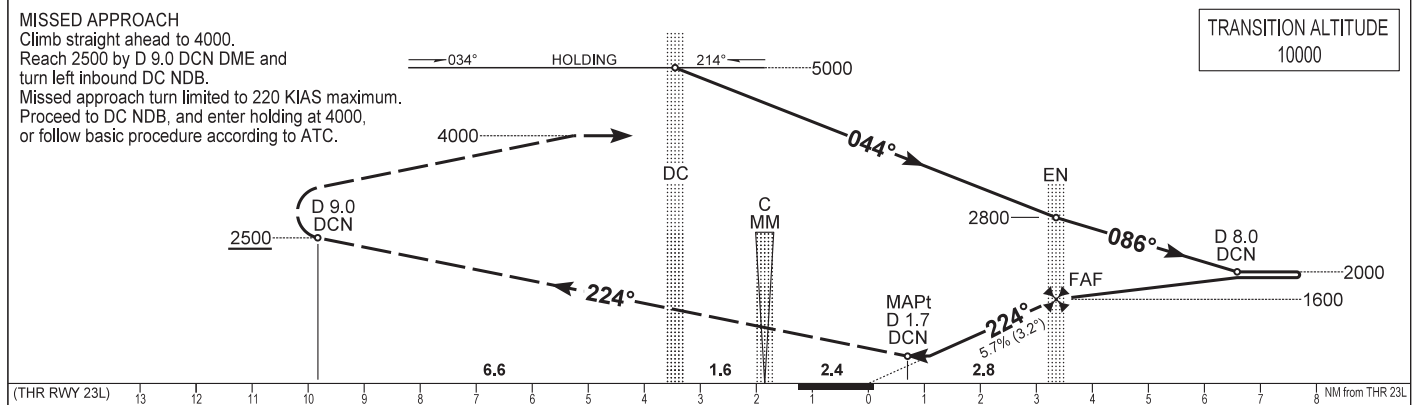
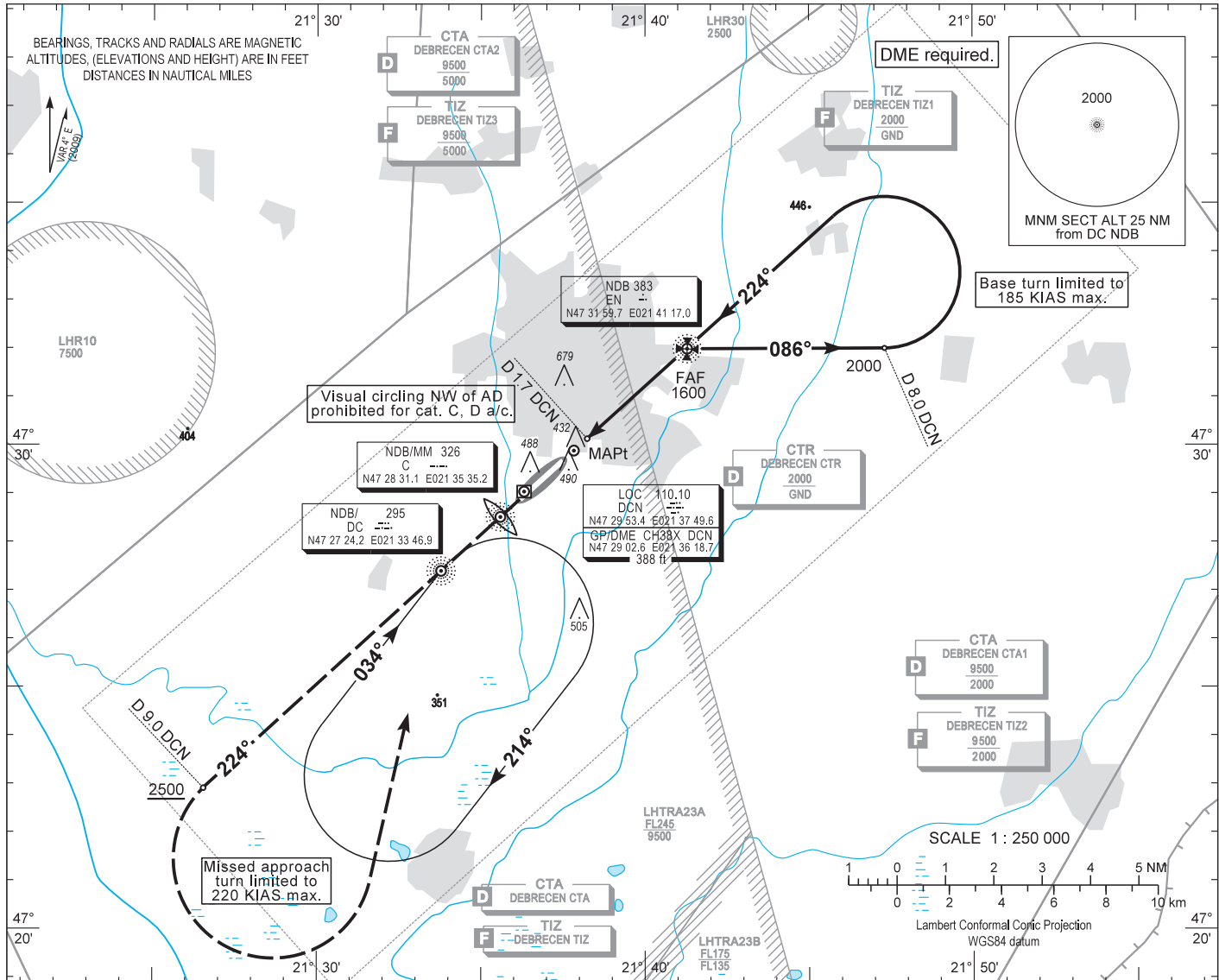
AIP HUNGARY

INSTRUMENT
APPROACH
CHART - ICAO

AERODROME ELEV 359
HEIGHTS RELATED TO
THR RWY 23L - ELEV 359

DEBRECEN TOWER 125.900
DEBRECEN INFO 125.900
BUDAPEST INFORMATION (EAST) 133.000

DEBRECEN
NDB RWY 23L
(ACFT CAT A, B, C, D)



(THR RWY 23L)		13	12	11	10	9	8	7	6	5	4	3	2	1	0	1	2	3	4	5	6	7	8	NM from THR 23L												
OCA (OCH)		A				B				C				D				GROUND SPEED					kt	60	90	120	150	180								
STRAIGHT-IN APPROACH		920 (560)																								FAF - MAPt 2.78 NM					MIN:sec	2:47	1:51	1:24	1:07	0:56
CIRCLING APPROACH		ft AMSL	1060	1060	1160	1160	SE of AD only		SE of AD only																											
		VIS. m	1900	2800	3700	4600																														

AD 2 LHDC INSTRUMENT APPROACH CHART NDB RWY 23L

NDB approach from DC NDB:

Initial altitude: 5000.
Proceed to EN NDB and descend to 2800 .
At EN NDB turn right to 086° and descend to 2000 .
Fly outbound to D 8.0 DCN DME and turn left to track 224° inbound EN NDB (185 KIAS max.).
Proceed to EN NDB and descend to 1600.
At EN NDB descend to 920 on track 224°.

Holding procedure:

Holding fix: DC NDB.
Right hand holding pattern.

Sector 1 (parallel) entry prohibited.

Maximum speed: 220 KIAS
Inbound track: 034°
Outbound track: 214°
Rate of turn: 3°/sec. or 25° bank angle
(whichever requires lesser bank)
Outbound timing: 1 min.
Minimum holding altitude: 5000
4000 for Missed Approach

Final approach descent: 3.23°