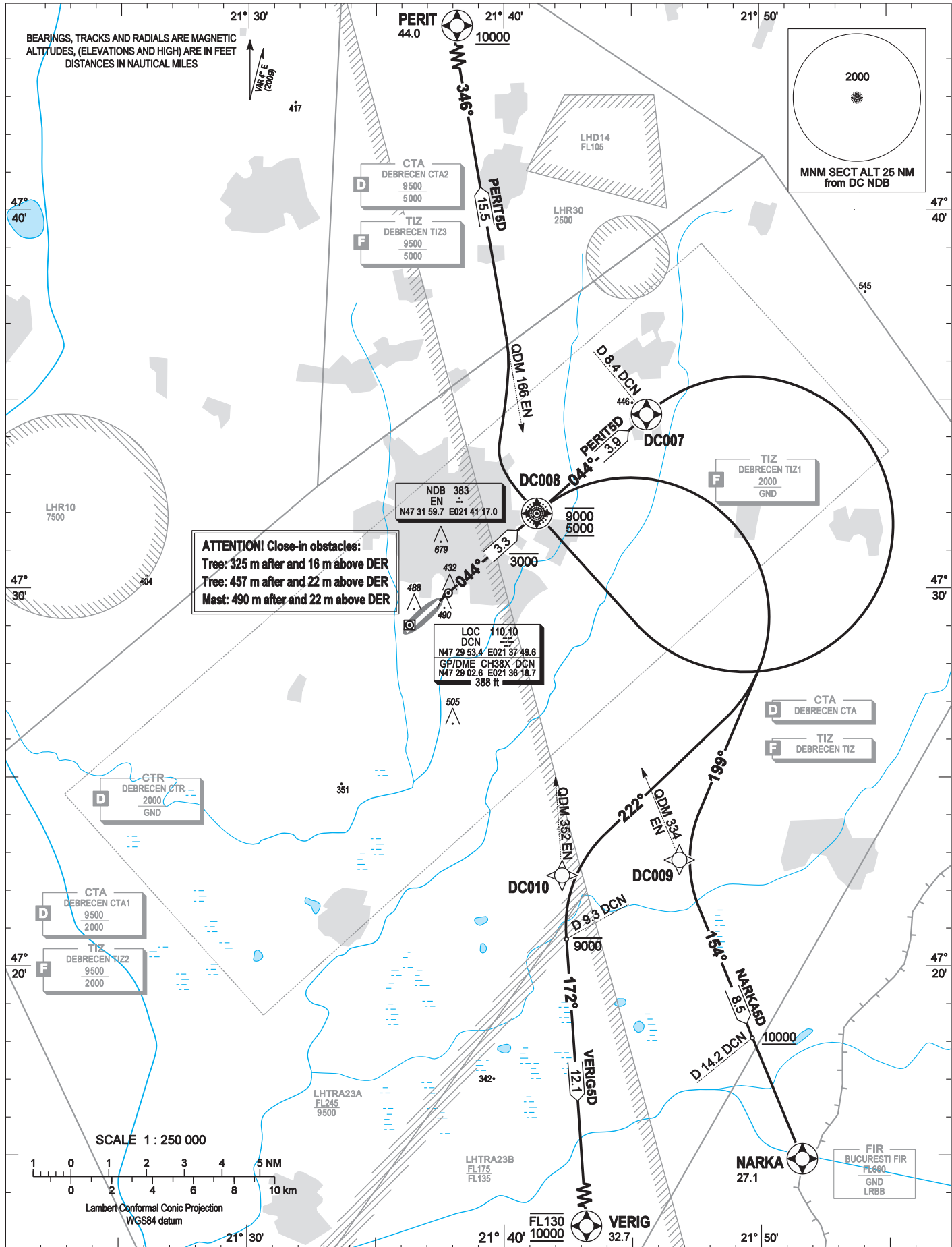


STANDARD DEPARTURE CHART -  
INSTRUMENT (SID) -  
ICAO

TRANSITION ALTITUDE  
10000

DEBRECEN TOWER	125.900
DEBRECEN INFO	125.900
BUDAPEST INFORMATION (EAST)	133.000

DEBRECEN  
RWY 05R  
NARKA5D PERIT5D VERIG5D



**AD 2 LHDC STANDARD DEPARTURE CHART INSTRUMENT RWY 05R**

NAME	PROCEDURE	CLIMBING	R/T FAILURE
<b>PERIT5D</b> (44.0)	Continue RWY track and cross EN NDB at or below 3000. Continue to D 8.4 DCN DME and turn right towards EN NDB. Cross EN NDB between 5000 and 9000 and turn right to intercept track 346° inbound PERIT (QDM 166 EN NDB ). When passing 9000 change altimeter setting for Budapest QNH provided by DEBRECEN TWR/INFO or BUDAPEST INFORMATION. Further climb only when established on track 346° inbound PERIT. Cross PERIT at 10000 or above. PDG: 3.6% due airspace.	After departure climb initially 10000. Further climb only by ATC.	If a departing controlled aircraft having acknowledged an initial or intermediate clearance to climb to a level other than the one specified in the filed FPL for the en-route phase and no time or geographical limit was included in the clearance, should climb and maintain the level to which it was cleared for 7 minutes and then should climb to the level included in the filed FPL unless the cruising level was definitely specified in the en-route clearance. If the last acknowledged clearance includes lower altitude than 10000 without time or geographical limit then the aircraft should climb and maintain 10000 for 7 min. and then climb to the appropriate cruising level as above.
<b>NARKA5D</b> (27.1)	Continue RWY track and cross EN NDB at or below 3000. At EN NDB turn right to 199° to intercept track 154° inbound NARKA (QDM 334 EN NDB). Cross D 14.2 DCN DME at or above 10000 and proceed to NARKA. When passing 9000 change altimeter setting for Budapest QNH provided by DEBRECEN TWR/INFO or BUDAPEST INFORMATION. PDG: 6.7% due airspace.		
<b>VERIG5D</b> (32.7)	Continue RWY track and cross EN NDB at or below 3000. At EN NDB climb 9000 and turn right to 222° to intercept track 172° inbound VERIG (QDM 352 EN NDB). Climb above 9000 only after established on track 172° inbound VERIG AND after crossing D 9.3 DCN DME outbound. Cross VERIG between 10000 and FL130. When passing 9000 change altimeter setting for Budapest QNH provided by DEBRECEN TWR/INFO or BUDAPEST INFORMATION. PDG: 4.9% due airspace.		

Turns: bank 15° for Cat. C, D  
bank 10° for Cat. A, B  
250 KIAS max.

**WAYPOINT COORDINATES**  
**AD 2-LHDC-RNAV<sub>(GNSS, DME/DME)</sub> SID 05R underlay**

WAYPOINT	LATITUDE	LONGITUDE	WAYPOINT TYPE
<b>DC008</b>	N47 31 59.7	E021 41 17.0	FLY-OVER
<b>DC007</b>	N47 34 36.6	E021 45 34.6	FLY-OVER
<b>DC009</b>	N47 22 49.4	E021 46 50.0	FLY-BY
<b>DC010</b>	N47 22 24.9	E021 42 15.8	FLY-BY