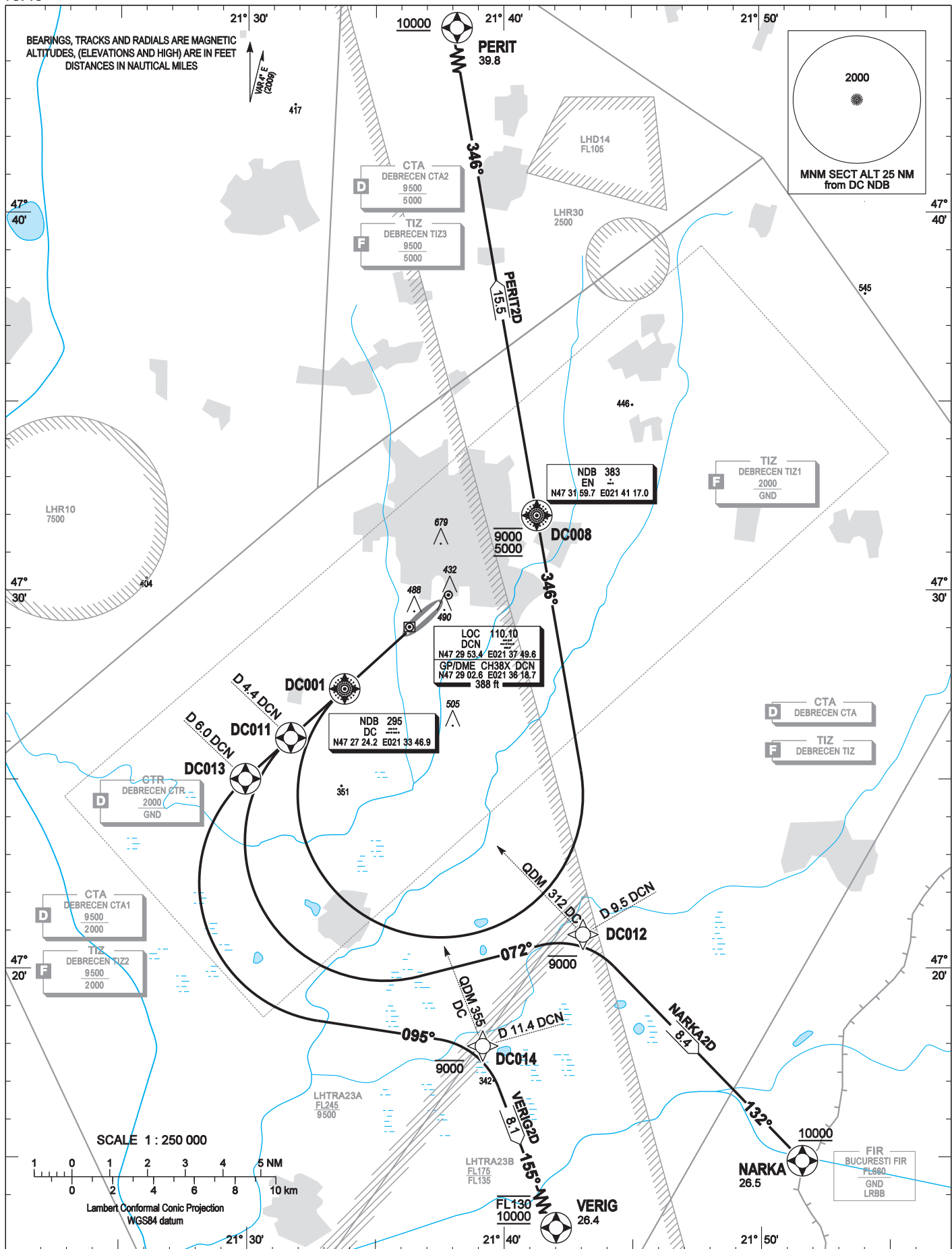


STANDARD DEPARTURE CHART -  
INSTRUMENT (SID) -  
ICAO

TRANSITION ALTITUDE  
10000

DEBRECEN TOWER	125.900
DEBRECEN INFO	125.900
BUDAPEST INFORMATION (EAST)	133.000

DEBRECEN  
RWY 23L  
NARKA2D PERIT2D VERIG2D



**AD 2 LHDC STANDARD DEPARTURE CHART INSTRUMENT RWY 23L**

NAME	PROCEDURE	CLIMBING	R/T FAILURE
<b>PERIT2D</b> (39.8)	Continue RWY track and at DC NDB turn left towards EN NDB. Cross EN NDB between 5000 and 9000 and intercept track 346 inbound to PERIT (QDM 166 EN NDB). Further climb only when established on track 346° inbound to PERIT. Cross PERIT at 10000 or above. When passing 9000 change altimeter setting for Budapest QNH provided by DEBRECEN TWR/INFO or BUDAPEST INFORMATION. PDG: 4.0% due airspace.	After departure climb initially 10000. Further climb only by ATC.	If a departing controlled aircraft having acknowledged an initial or intermediate clearance to climb to a level other than the one specified in the filed FPL for the en-route phase and no time or geographical limit was included in the clearance, should climb and maintain the level to which it was cleared for 7 minutes and then should climb to the level included in the filed FPL unless the cruising level was definitely specified in the en-route clearance. If the last acknowledged clearance includes lower altitude than 10000 without time or geographical limit then the aircraft should climb and maintain 10000 for 7 min. and then climb to the appropriate cruising level as above.
<b>NARKA2D</b> (26.5)	Continue RWY track. At D 4.4 DCN DME climb 9000 and turn left to 072° to intercept track 132° inbound to NARKA (QDM 312 DC NDB). Further climb only when established on track 132° inbound to NARKA <u>AND</u> after crossing D 9.5 DCN DME outbound. Cross NARKA at or above 10000. When passing 9000 change altimeter setting for Budapest QNH provided by DEBRECEN TWR/INFO or BUDAPEST INFORMATION. PDG: 6.7% due airspace.		
<b>VERIG2D</b> (26.4)	Continue RWY track. At D 6.0 DCN DME climb 9000 and turn left to 095° to intercept track 155° inbound to VERIG (QDM 335 DC NDB). Further climb only when established on track 155° inbound to VERIG <u>AND</u> after crossing D 11.4 DCN DME outbound. Cross VERIG between 10000 and FL130. When passing 9000 change altimeter setting for Budapest QNH provided by DEBRECEN TWR/INFO or BUDAPEST INFORMATION. PDG: 6.0% due airspace.		

Turns: bank 15° for Cat. C, D  
bank 10° for Cat. A, B  
250 KIAS max.

**WAYPOINT COORDINATES**  
AD 2-LHDC-RNAV<sub>(GNSS, DME/DME)</sub> SID 23L underlay

WAYPOINT	LATITUDE	LONGITUDE	WAYPOINT TYPE
<b>DC001</b>	N47 27 24.2	E021 33 46.9	FLY-OVER
<b>DC008</b>	N47 31 59.7	E021 41 17.0	FLY-OVER
<b>DC011</b>	N47 26 06.4	E021 31 41.1	FLY-OVER
<b>DC012</b>	N47 20 54.3	E021 43 04.4	FLY-BY
<b>DC013</b>	N47 25 01.3	E021 29 54.9	FLY-OVER
<b>DC014</b>	N47 17 57.2	E021 39 10.3	FLY-BY