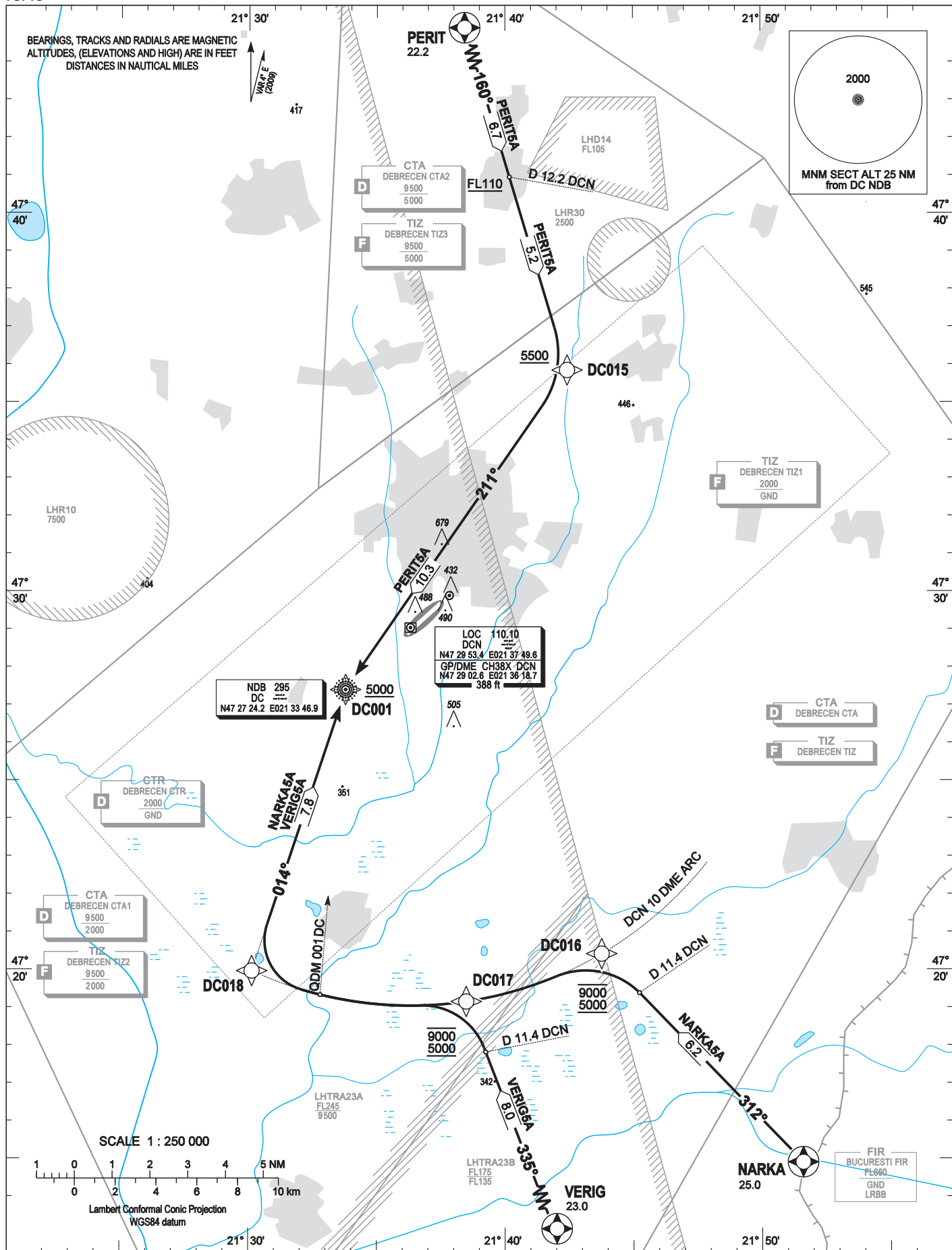


STANDARD ARRIVAL CHART -  
INSTRUMENT (STAR) -  
ICAO

TRANSITION ALTITUDE  
10000

DEBRECEN TOWER 125.900  
DEBRECEN INFO 125.900  
BUDAPEST INFORMATION (EAST) 133.000

DEBRECEN  
RWY 05R / 23L  
NARKA5A PERIT5A VERIG5A



**AD 2 LHDC STANDARD ARRIVAL CHART INSTRUMENT RWY 05R / 23L**

NAME	PROCEDURE	DESCENT	R/T FAILURE
<b>PERIT5A</b> (22.2)	After passing PERIT fly on track 160 (direction NARKA) and descend to FL 110 or above by ATC. At D 12.2 DCN DME descend to 5500. Proceed on track 160° and intercept bearing 211° inbound DC NDB. Descend to 5000 after established inbound DC NDB.	When passing a fix, facility or waypoint, descent have to be initiated without delay to the lowest authorized level (depicted on the chart or by ATC) of the following segment.	If an arriving controlled aircraft experiencing R/T failure, it shall follow the STAR to 5000, fly a standard entry into the DC holding and 1 more holding pattern, after which a basic instrument approach procedure shall be initiated according to the known wind direction.
<b>NARKA5A</b> (25.0)	From NARKA proceed direction DC NDB on track 312°. Cross D 11.4 DCN DME between 9000 and 5000 and turn left to join the D 10.0 DCN DME arc. Proceed on the DME arc and at QDM 001 DC NDB turn right to intercept bearing 014° inbound DC NDB.		
<b>VERIG5A</b> (23.0)	From VERIG proceed direction DC NDB on track 335°. Cross D 11.4 DCN DME between 9000 and 5000 and turn left to join the D 10.0 DCN DME arc. Proceed on the DME arc and at QDM 001 DC NDB turn right to intercept bearing 014° inbound DC NDB.		

WAYPOINT COORDINATES AD 2-LHDC-RNAV <sub>(GNSS, DME/DME)</sub> STAR underlay			
WAYPOINT	LATITUDE	LONGITUDE	WAYPOINT TYPE
<b>DC001</b>	N47 27 24.2	E021 33 46.9	FLY-BY
<b>DC015</b>	N47 35 51.1	E021 42 25.6	FLY-BY
<b>DC016</b>	N47 20 25.3	E021 43 45.6	FLY-BY
<b>DC017</b>	N47 19 09.5	E021 38 29.2	FLY-BY
<b>DC018</b>	N47 19 58.2	E021 30 08.1	FLY-BY

Straight segments shall be utilized through waypoints DC016 - DC017 - DC018 for the database coding of the conventional DME ARCs.