

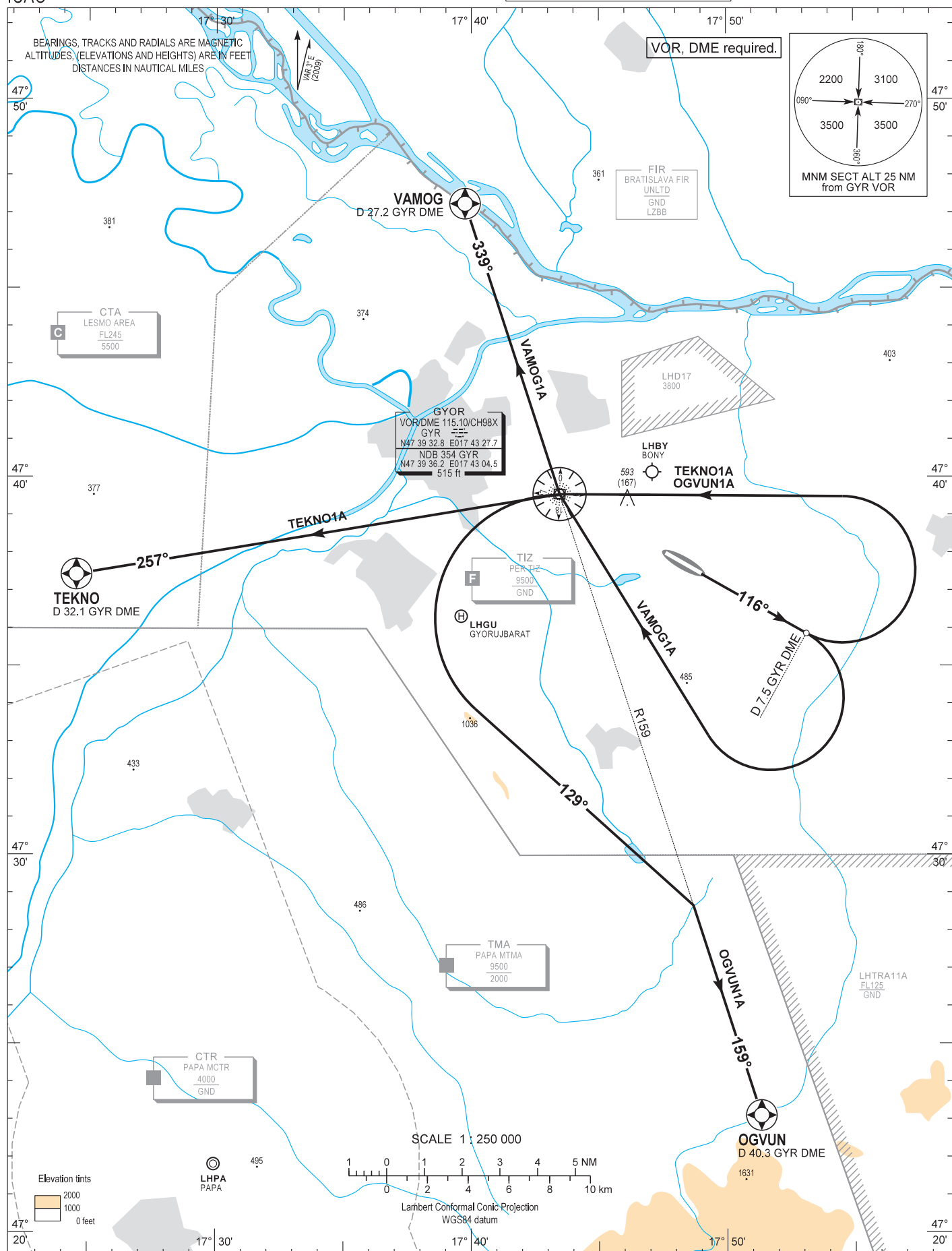
AIP HUNGARY

STANDARD DEPARTURE CHART -
INSTRUMENT (SID) -
ICAO

TRANSITION ALTITUDE
10000

PÉR INFO 129.900
BUDAPEST INFORMATION (WEST) 125.500

GYÖR/PÉR
RWY 12
OGVUN1A TEKNO1A VAMOG1A



AD 2 LHPR STANDARD DEPARTURE CHART INSTRUMENT RWY 12

NAME (length)	PROCEDURE	CLIMBING
VAMOG1A (27.2)	RWY HDG to D 7.5 GYR DME then turn right direct to GYR. At GYR intercept radial 339° outbound to VAMOG.	Climb initially 9000 AMSL. Further climb only by ATC.
TEKNO1A (32.1)	RWY HDG to D 7.5 GYR DME then turn left direct to GYR. At GYR intercept radial 257° outbound to TEKNO.	
OGVUN1A (40.3)	RWY HDG to D 7.5 GYR DME then turn left direct to GYR. At GYR turn left to intercept radial 159° outbound to OGVUN.	