

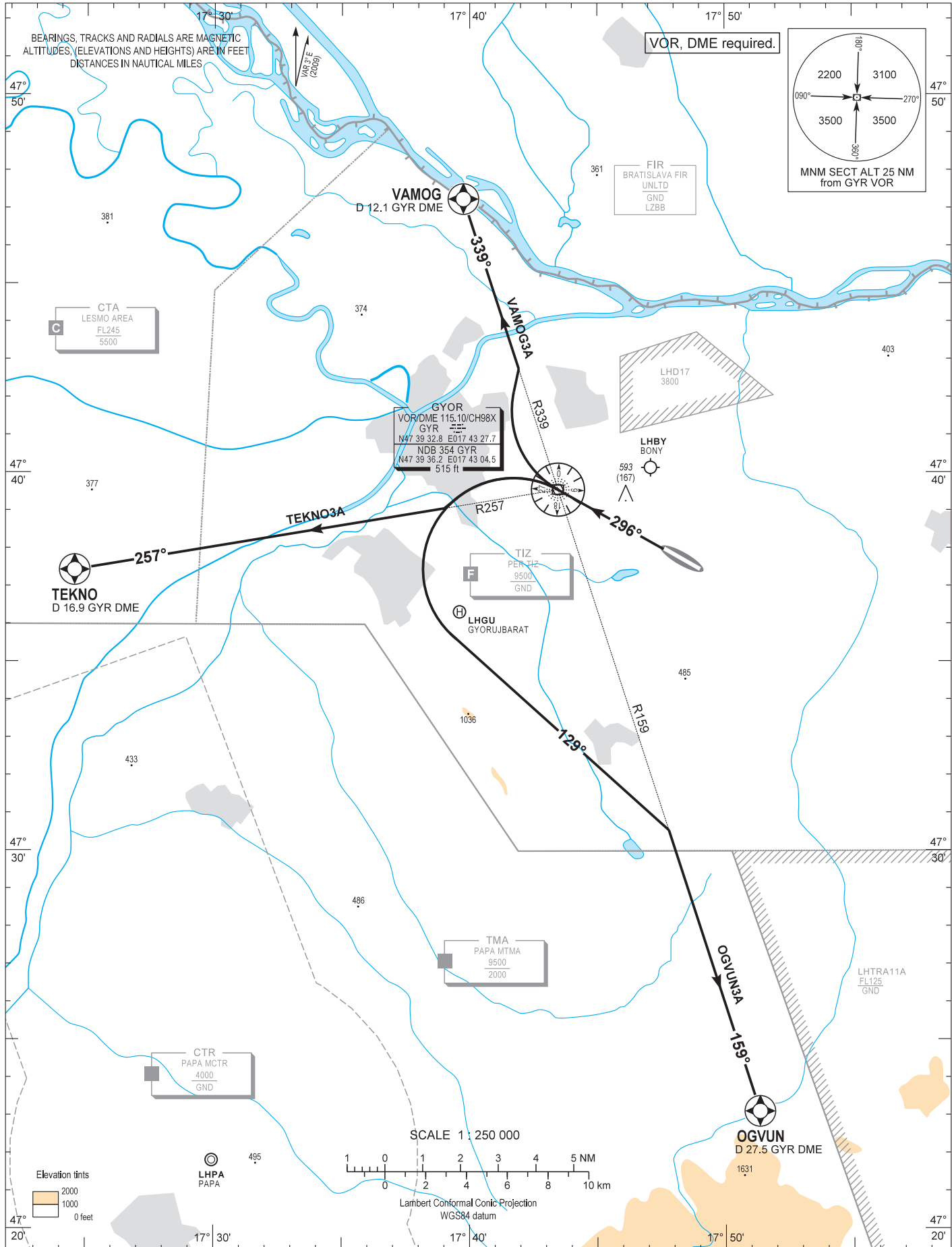
AIP HUNGARY

STANDARD DEPARTURE CHART -  
INSTRUMENT (SID) -  
ICAO

TRANSITION ALTITUDE  
10000

PÉR INFO 129.900  
BUDAPEST INFORMATION (WEST) 125.500

GYÖR/PÉR  
RWY 30  
OGVUN3A TEKNO3A VAMOG3A



**AD 2 LHPR STANDARD DEPARTURE CHART INSTRUMENT RWY 30**

NAME (length)	PROCEDURE	CLIMBING
<b>VAMOG3A</b> (12.1)	After departure proceed to GYR. At GYR turn right to intercept radial 339° outbound to VAMOG. D 12.1 GYR DME.	Climb initially 9000 AMSL. Further climb only by ATC.
<b>TEKNO3A</b> (16.9)	After departure proceed to GYR. At GYR turn left to intercept radial 257° outbound to TEKNO. D 16.9 GYR DME.	
<b>OGVUN3A</b> (27.5)	After departure proceed to GYR. At GYR turn left to track 129° to intercept radial 159° outbound to OGVUN. D 27.5 GYR DME.	