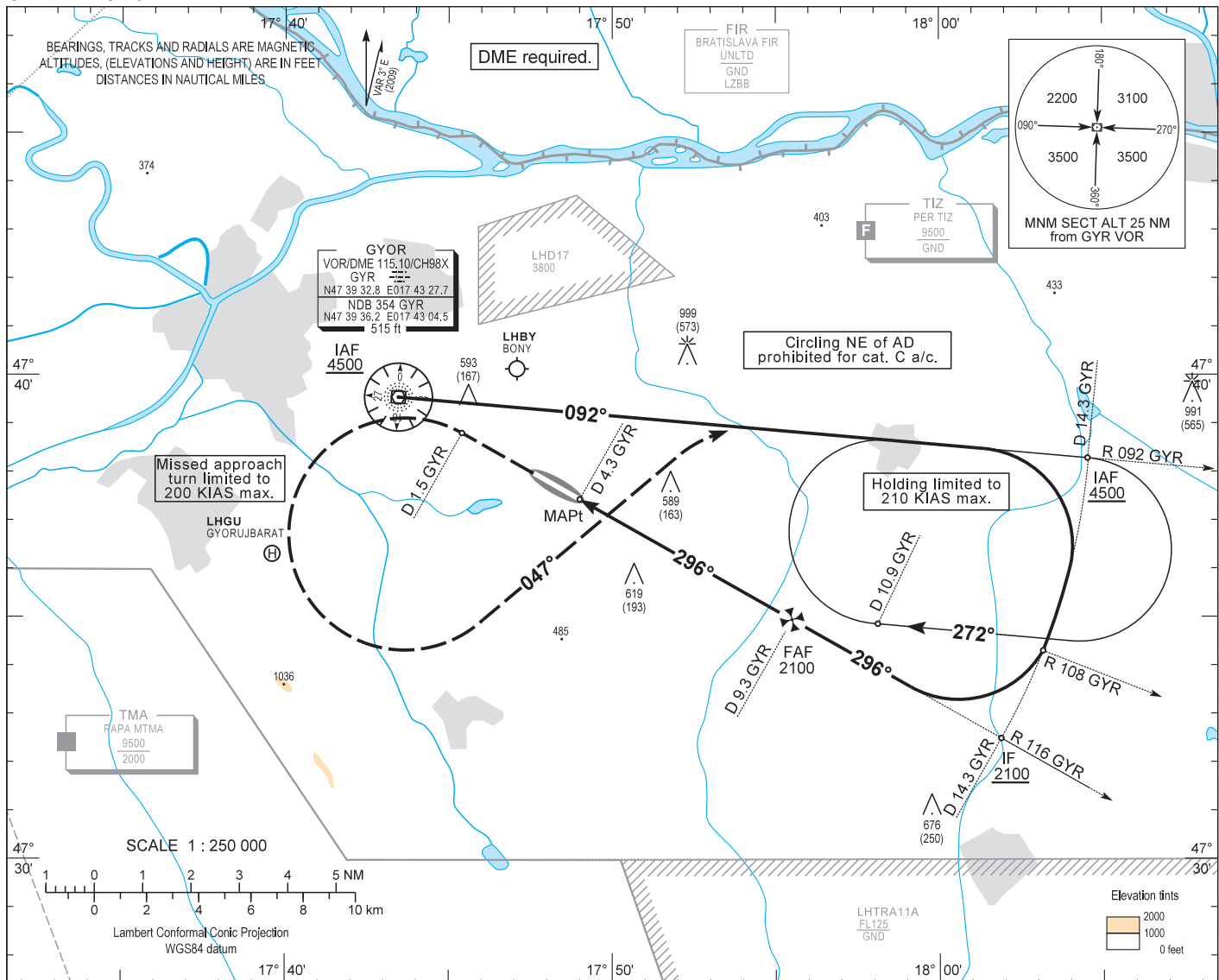


AIP HUNGARY

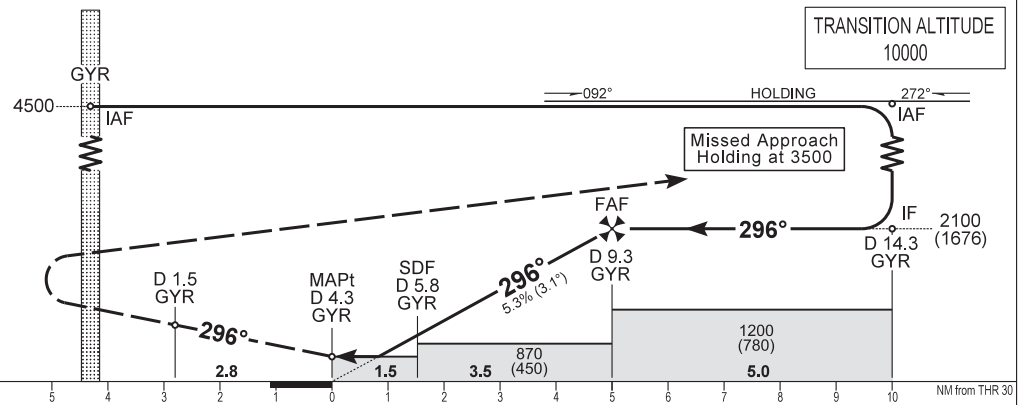
INSTRUMENT APPROACH CHART - ICAO
AERODROME ELEV 426
HEIGHTS RELATED TO THR RWY 30 - ELEV 426

PÉR INFO 129.900
BUDAPEST INFORMATION (WEST) 125.500

GYŐR/PÉR
VOR RWY 30
(ACFT CAT A, B, C)



MISSED APPROACH
Continuous climb to 3500.
Straight ahead, then at D 1.5 GYR turn left (200 KIAS max.) to track 047° to intercept R 092 GYR outbound and hold.



| | | | | | | | | | | | | | | | | | | | | | | | |
|----------------------|--|---------|---|-----------|-----------|------------|---------------|---|---|---|---|---|---|---|---|---|---|---|---|---|---|----|----------------|
| (THR RWY 30) | | 10 | 9 | 8 | 7 | 6 | 5 | 4 | 3 | 2 | 1 | 0 | 1 | 2 | 3 | 4 | 5 | 6 | 7 | 8 | 9 | 10 | NM from THR 30 |
| OCA (H) | | A | | | B | | | C | | | | | | | | | | | | | | | |
| STRAIGHT-IN APPROACH | | VOR | | 790 (370) | | | | | | | | | | | | | | | | | | | |
| CIRCLING APPROACH | | ft AMSL | | 890 (470) | 930 (510) | 1140 (720) | SW of AD only | | | | | | | | | | | | | | | | |
| | | VIS. m | | 1900 | 2800 | 3700 | | | | | | | | | | | | | | | | | |

| | | | | | |
|-------------------|-------|--------|--------|-------|-------|
| CDFA with GYR DME | NM | 9.0 | 8.0 | 7.0 | 6.0 |
| | ft | 2010 | 1680 | 1360 | 1030 |
| | (HGT) | (1580) | (1260) | (940) | (610) |

Timing not authorized to define the MAPt.

| | | | | | |
|-------------------|---------|------|------|------|------|
| GROUND SPEED | kt | 70 | 100 | 130 | 160 |
| FAF - MAPt 5.0 NM | MIN:sec | 4:17 | 3:00 | 2:18 | 1:53 |
| VSP | ft/min | 380 | 540 | 710 | 870 |

AD 2 LHPR INSTRUMENT APPROACH CHART VOR RWY 30

| FIX | LATITUDE | LONGITUDE | FIX FORMATION |
|--------------|-------------|--------------|--------------------------------|
| IAF | N47 39 32.8 | E017 43 27.7 | GYR VOR |
| IAF | N47 38 17.1 | E018 04 32.0 | R 092 GYR VOR / D 14.3 GYR DME |
| IF | N47 32 30.2 | E018 01 51.4 | R 116 GYR VOR / D 14.3 GYR DME |
| FAF | N47 34 58.2 | E017 55 26.1 | R 116 GYR VOR / D 9.3 GYR DME |
| SDF | N47 36 41.9 | E017 50 55.8 | R 116 GYR VOR / D 5.8 GYR DME |
| MAPt | N47 37 25.9 | E017 49 00.0 | R 116 GYR VOR / D 4.3 GYR DME |
| MA TP | N47 38 48.4 | E017 45 23.7 | R 116 GYR VOR / D 1.5 GYR DME |

Approach from GYR VOR:

Initial alt: 4500.
 Leave GYR VOR on R 092. Join D 14.3 GYR DME arc CW.
 Descend to altitude 2100.
 After passing R 108 GYR VOR leading radial turn right and intercept R 116 GYR VOR inbound for final RWY 30.
 At D 9.3 GYR VOR descend 870.
 After passing step down fix at D 5.8 GYR VOR descend 790.

Approach holding procedure:

Holding fix: GYR VOR R 092 / D 14.3.
 Maximum speed: 210 KIAS
 Inbound track: 092°
 Outbound track: 272°
 Turns: Right
 Outbound timing: 1 min.
 Minimum holding altitude: 4500 (3500 for Missed Approach)
 MOCA: 2000
 Entry: Sector 1 (parallel) and Sector 2 (offset) entries prohibited

Final approach descent: 3.06°